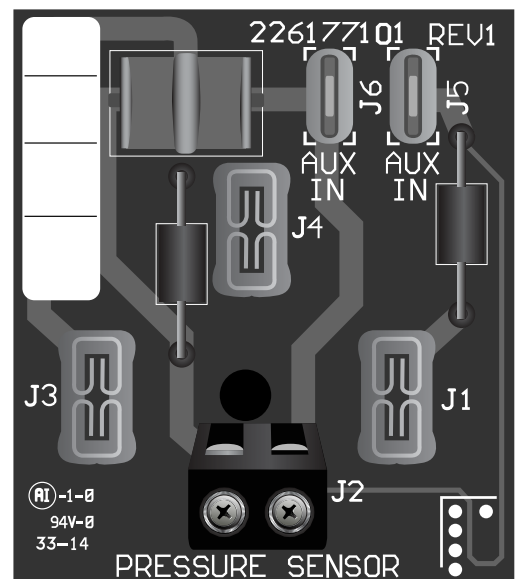


Replacement Pressure Input Board

Installation Manual



Before Getting Started

⚠ WARNING

Serious or fatal electrical shock may result from failure to connect the ground terminal to the motor, SubDrive/MonoDrive controller, metal plumbing, or other metal near the motor or cable, using wire no smaller than motor cable wires. To minimize risk of electrical shock, disconnect power before working on or around the SubDrive/MonoDrive system. CAPACITORS INSIDE THE SUBDRIVE/MONODRIVE CONTROLLER CAN STILL HOLD LETHAL VOLTAGE EVEN AFTER POWER HAS BEEN DISCONNECTED.

ALLOW 5 MINUTES FOR DANGEROUS INTERNAL VOLTAGE TO DISCHARGE BEFORE REMOVING SUBDRIVE/MONODRIVE COVER.

Do not use motor in swimming areas.

⚠ ATTENTION

This equipment should be installed by technically qualified personnel. Failure to install it in compliance with national and local electrical codes and within Franklin Electric recommendations may result in electrical shock or fire hazard, unsatisfactory performance, or equipment failure. Installation information is available through pump manufacturers and distributors, or directly from Franklin Electric at our toll-free number 1-800-348-2420.

⚠ CAUTION

Use SubDrive/MonoDrive only with Franklin Electric 4-inch submersible motors. Use of this unit with any other Franklin Electric motor or with motors from other manufacturers may result in damage to both motor and electronics. In applications where water delivery is critical, a replacement pressure sensor and/or back-up system should be readily available if the drive fails to operate as intended.

Tools and Hardware Required

Installation of the Pressure Input Board requires a screwdriver.

Purpose

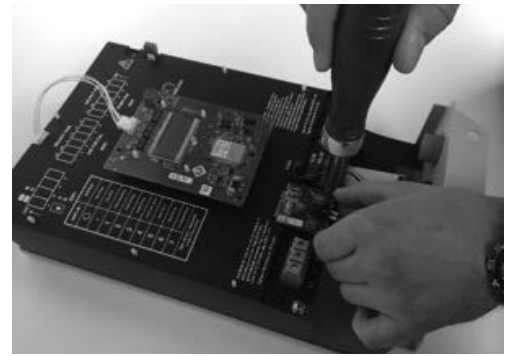
In some cases an electrical surge event on the pressure sensor cable can cause the SubDrive/MonoDrive to not operate correctly, even though the drive is powered on and the system pressure is below the pressure sensor setting. The Replacement Pressure Input Board provides a degree of reparability for SubDrive/MonoDrive NEMA 3R models that have experienced an electrical surge event on the pressure sensor drive input.

Installation Procedure

⚠ WARNING

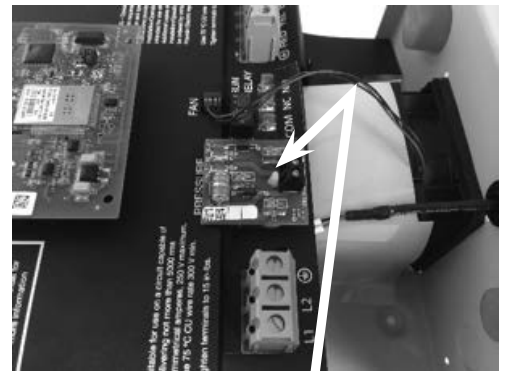
ALLOW 5 MINUTES FOR DANGEROUS INTERNAL VOLTAGE TO DISCHARGE BEFORE REMOVING DRIVE COVER.

1. Remove the drive cover.
2. Disconnect the pressure switch leads to the Pressure Input Board (PIB). Do NOT remove the pressure cable from the drive. (Figure 1)



(Figure 1)

3. Pull up on the PIB to remove from the drive. If a plastic retaining post is present, squeeze tab on plastic post to release the board from the drive. (Figures 2A and 2B)



(Figure 2A)

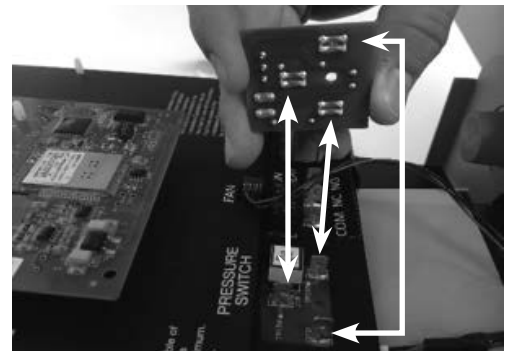
NOTE: DO NOT disturb the fan connection.



(Figure 2B)

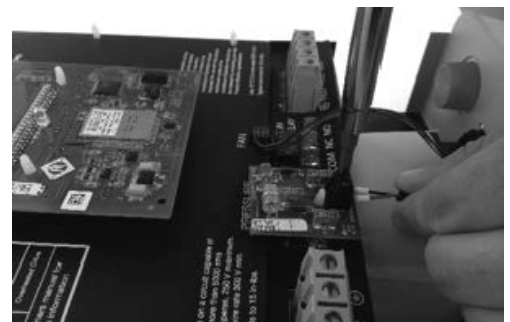
4. Install the replacement PIB to the drive by lining up the three tabs on the drive with the three receptacles on the PIB. Press board straight down. If a plastic retaining post is present, be sure the plastic tip of the post is fully inserted through the PIB and that the retaining tab is engaged. (Figure 3)

NOTE: DO NOT disturb the fan connection.



(Figure 3)

5. Reconnect pressure switch leads. Slightly tug on the pressure sensor leads to verify that they are securely installed. (Figure 4)



(Figure 4)

6. Replace the drive cover.

TOLL-FREE HELP FROM A FRIEND
Franklin Electric
Technical Service Hotline
800-348-2420



226541101
Rev. 0
05-15



Franklin Electric

9255 Coverdale Rd., Fort Wayne, IN 46809
Tel: 260-824-2900 • Fax: 260-824-2909
www.franklin-electric.com