

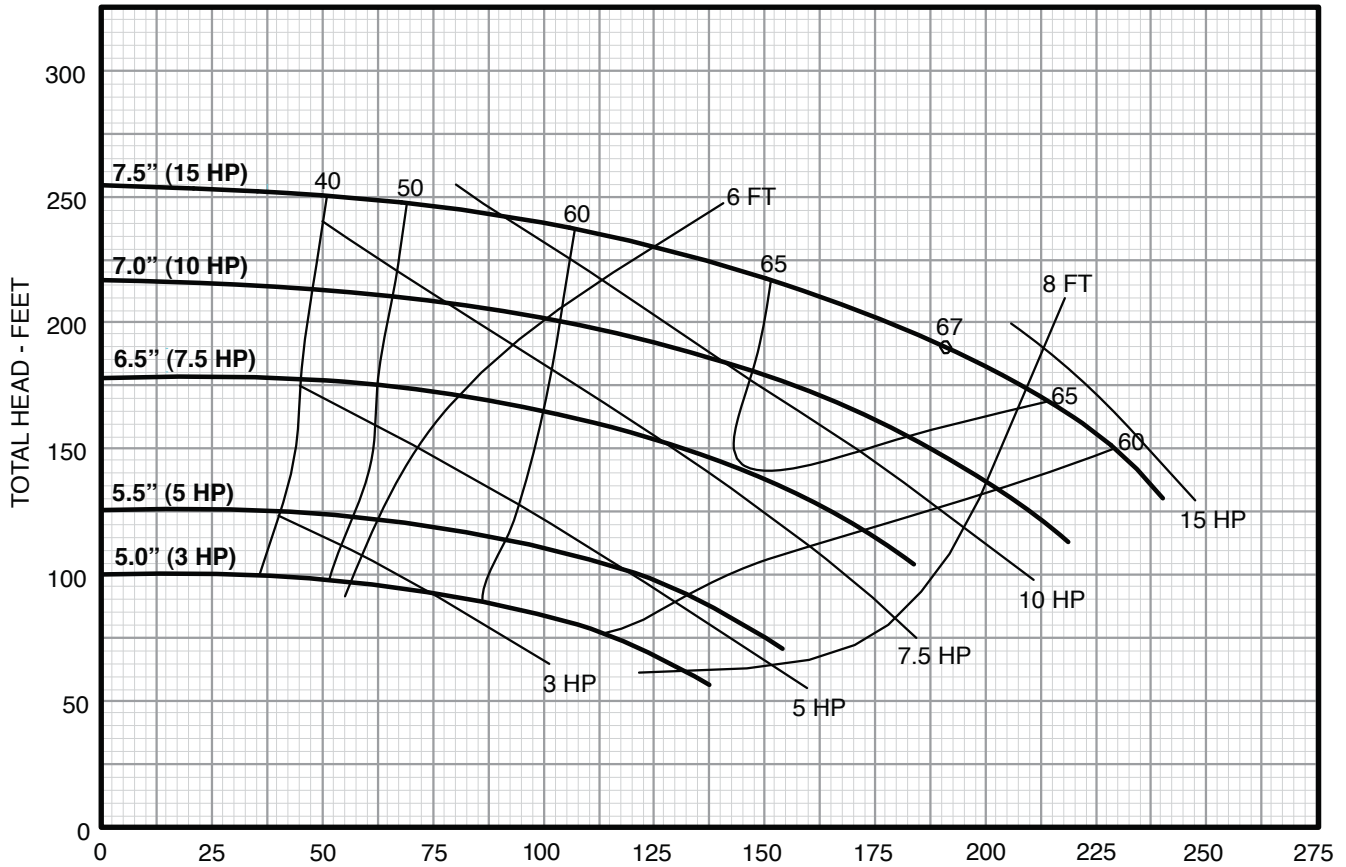
CENTRIFUGAL PUMPS

CLOSE-COUPLED 3600 RPM



PERFORMANCE CURVE

7.5" 2X3 - 75



FLOWRATE U.S. GALLONS PER MINUTE

IMPELLER DIA: Various
SPEED: 3550 RPM
SOLIDS:

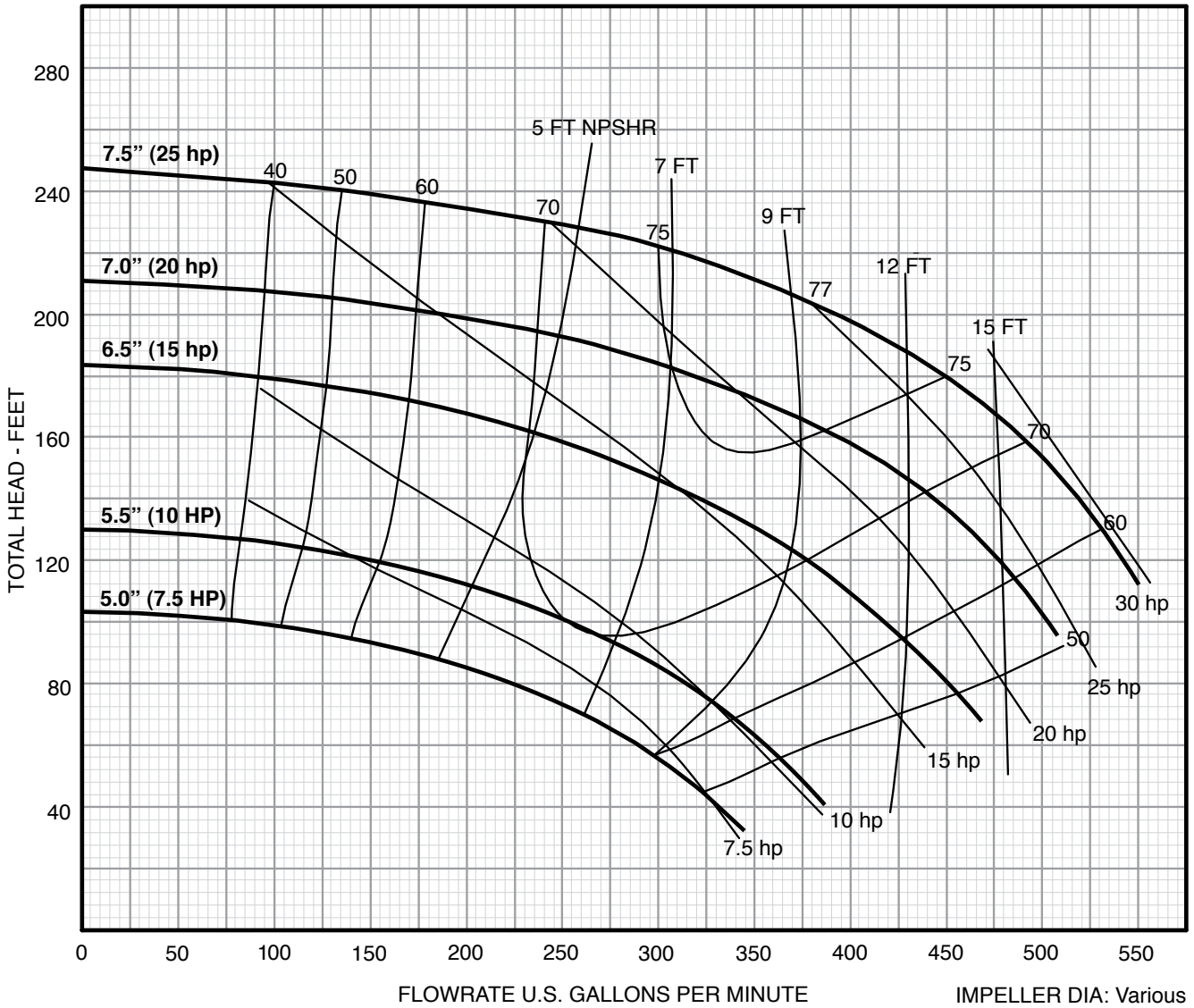
CENTRIFUGAL PUMPS

CLOSE-COUPLED 3600 RPM



PERFORMANCE CURVE

7.5" 2.5 X 4 - 75



IMPELLER DIA: Various
SPEED: 3575 RPM
SOLIDS: .56"

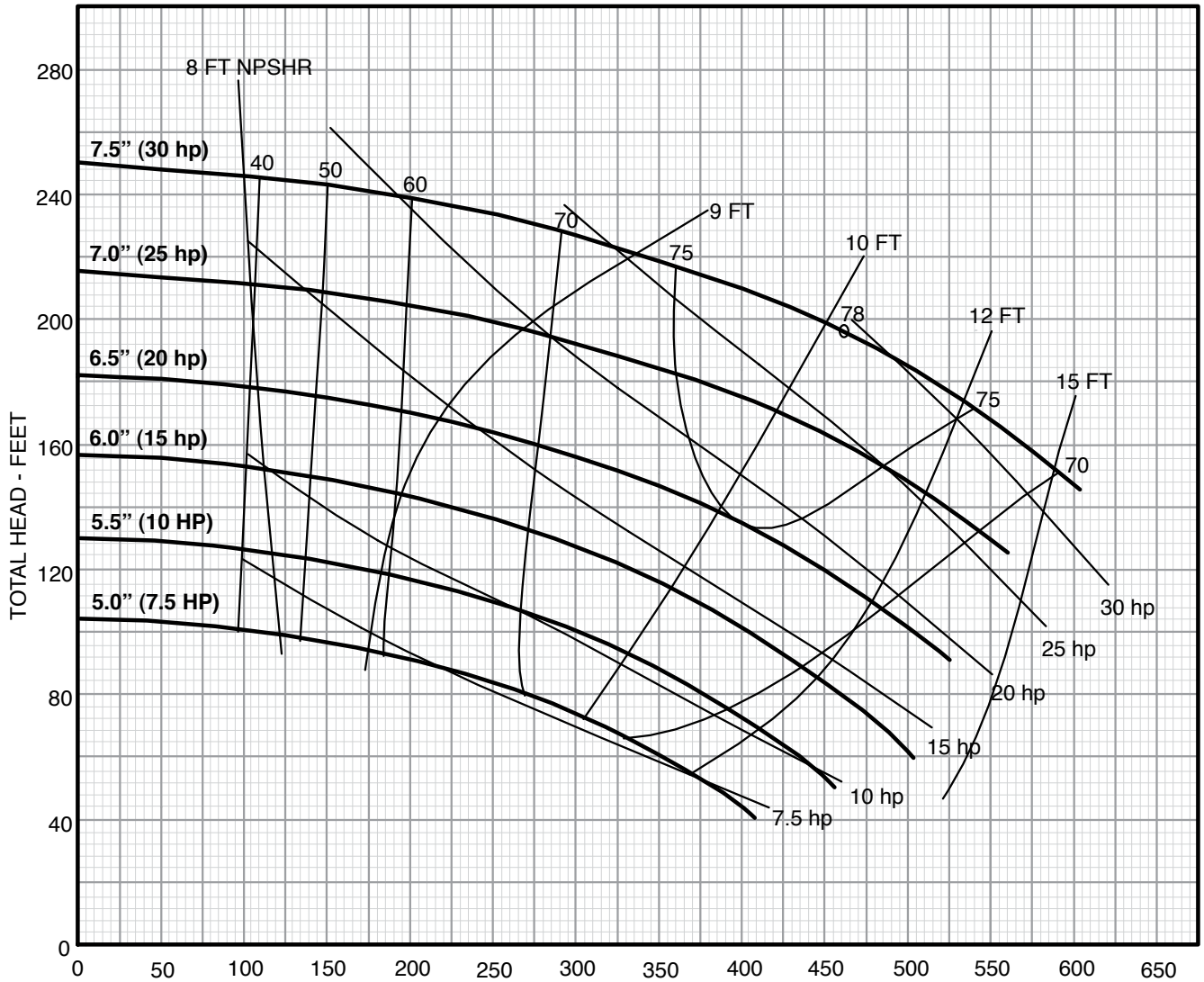
CENTRIFUGAL PUMPS

CLOSE-COUPLED 3600 RPM



PERFORMANCE CURVE

7.5" 3X4 - 75



FLOWRATE U.S. GALLONS PER MINUTE

IMPELLER DIA: Various
SPEED: 3570 RPM
SOLIDS: .62"

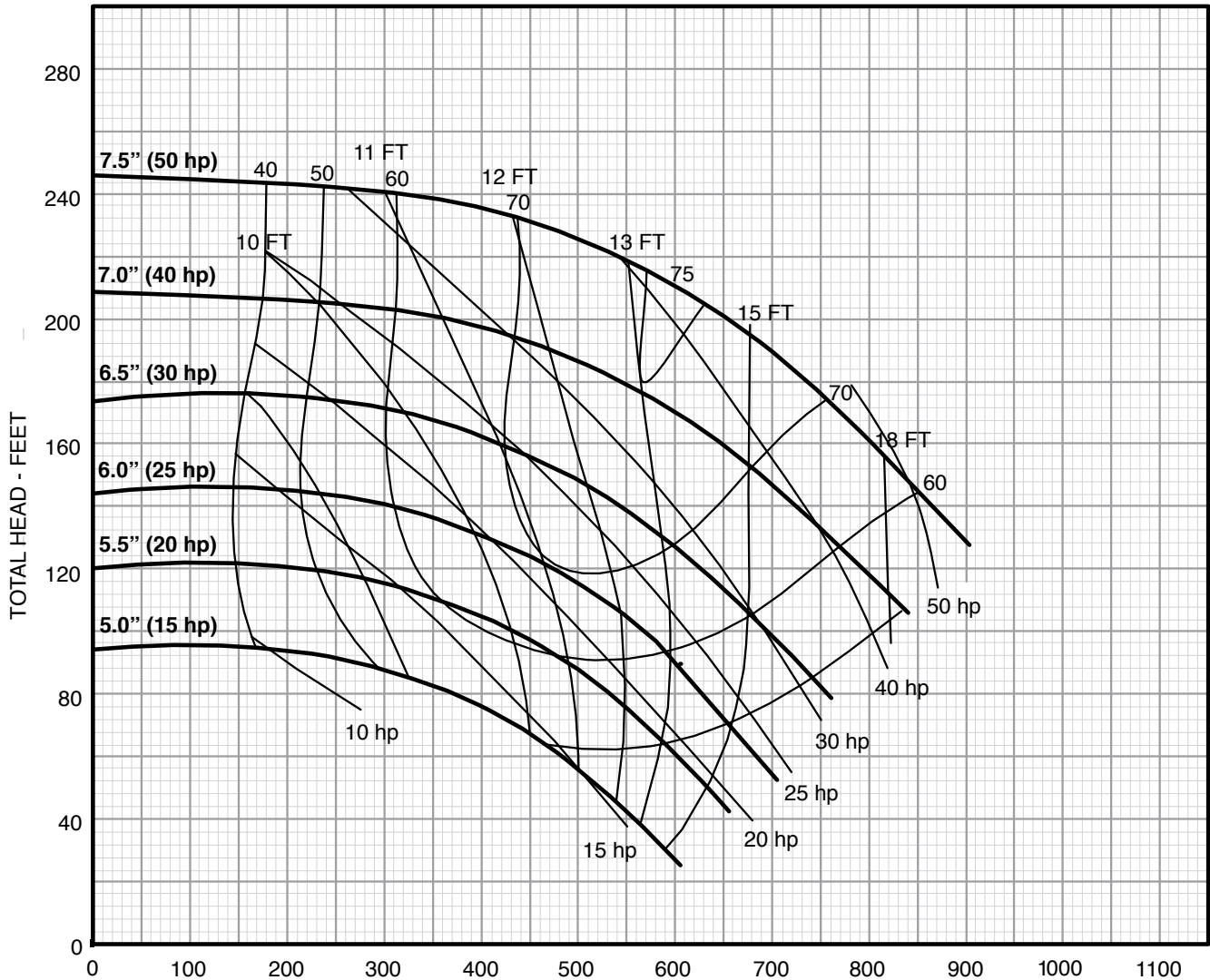
CENTRIFUGAL PUMPS

CLOSE-COUPLED 3600 RPM



PERFORMANCE CURVE

7.5" 4 X 4 - 75



FLOWRATE U.S. GALLONS PER MINUTE

IMPELLER DIA: Various
SPEED: 3550 RPM
SOLIDS: .94"

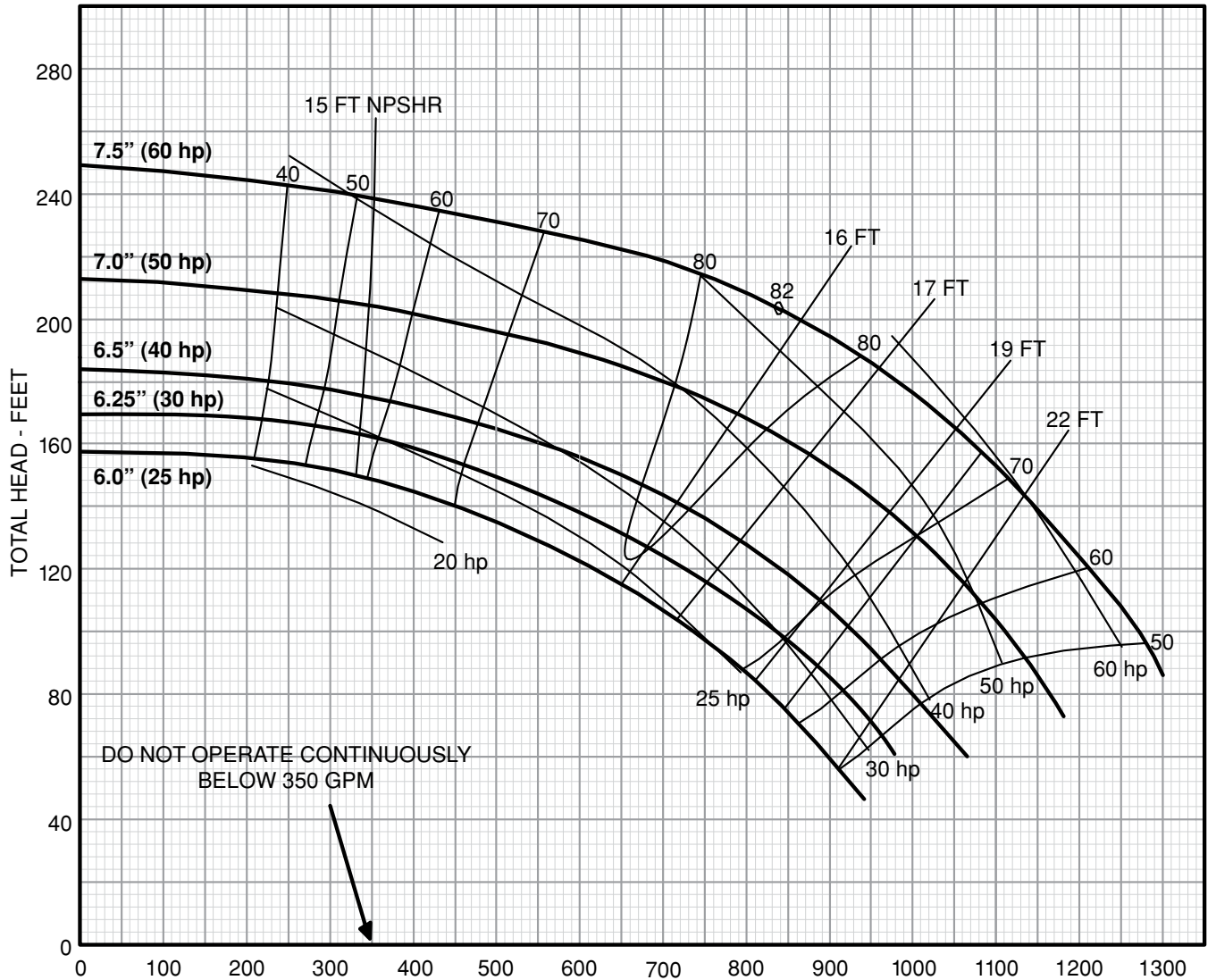
CENTRIFUGAL PUMPS

CLOSE-COUPLED 3600 RPM



PERFORMANCE CURVE

7.5" 4X5 - 75



IMPELLER DIA: Various
SPEED: 3575 RPM
SOLIDS: 1.31"

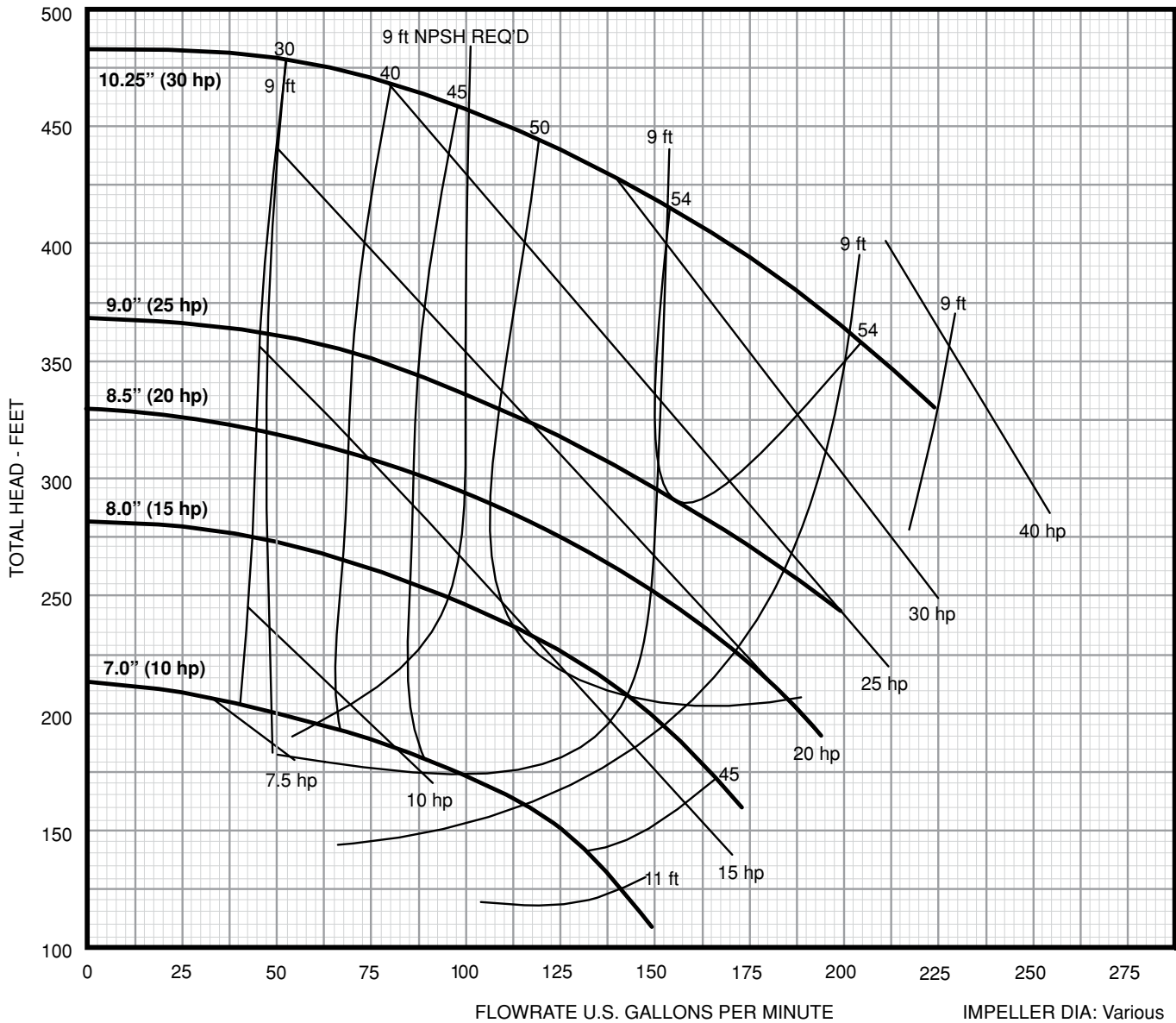
CENTRIFUGAL PUMPS

CLOSE-COUPLED 3600 RPM



PERFORMANCE CURVE

10" 2 X 3 - 10



IMPELLER DIA: Various
SPEED: 3570 RPM
SOLIDS: .38"

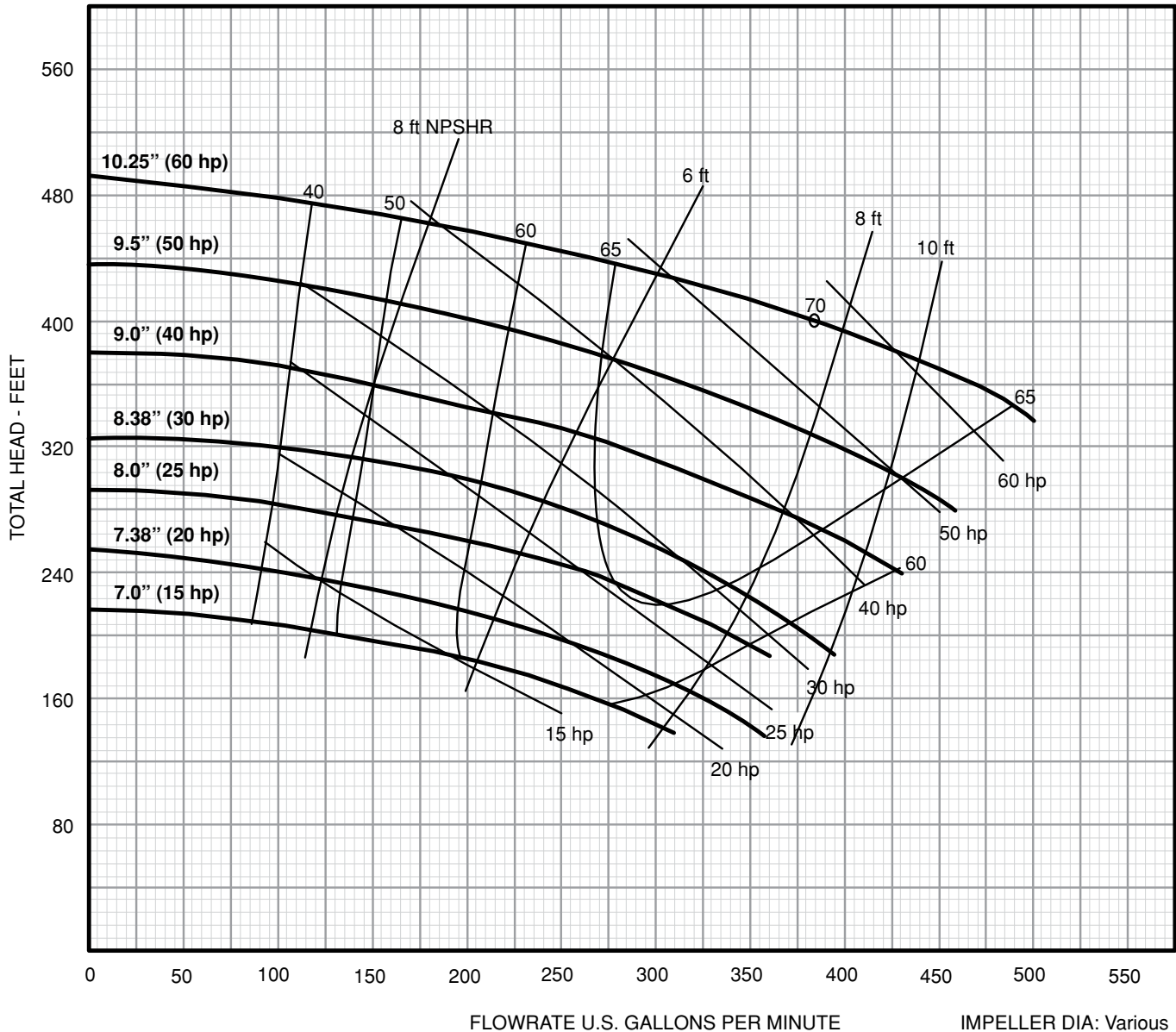
CENTRIFUGAL PUMPS

CLOSE-COUPLED 3600 RPM



PERFORMANCE CURVE

10" 2.5 X 4 - 10



IMPELLER DIA: Various
SPEED: 3575 RPM
SOLIDS: .56"

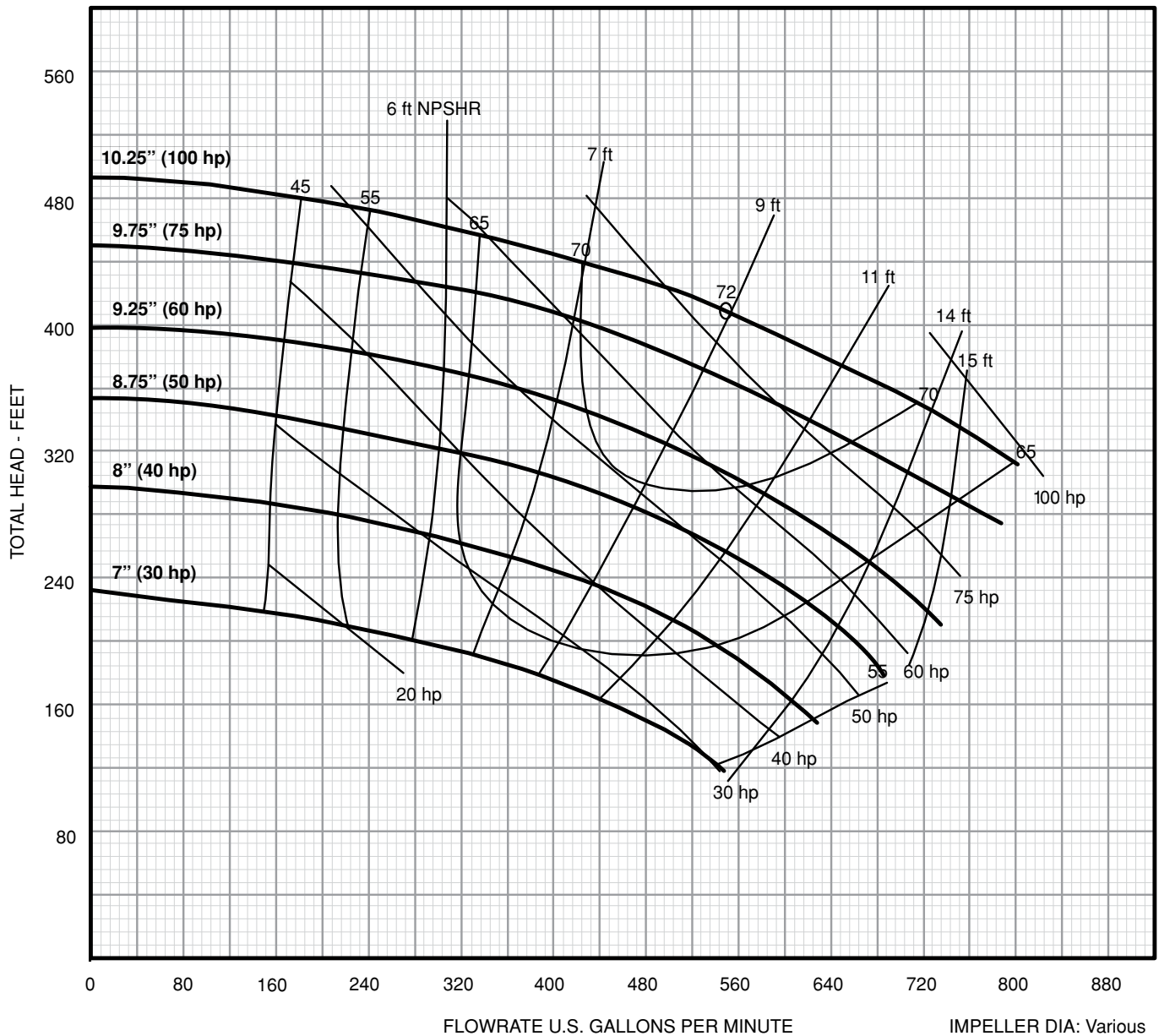
CENTRIFUGAL PUMPS

CLOSE-COUPLED 3600 RPM



PERFORMANCE CURVE

10" 3 X 4 - 10



IMPELLER DIA: Various
SPEED: 3570 RPM
SOLIDS: .69"

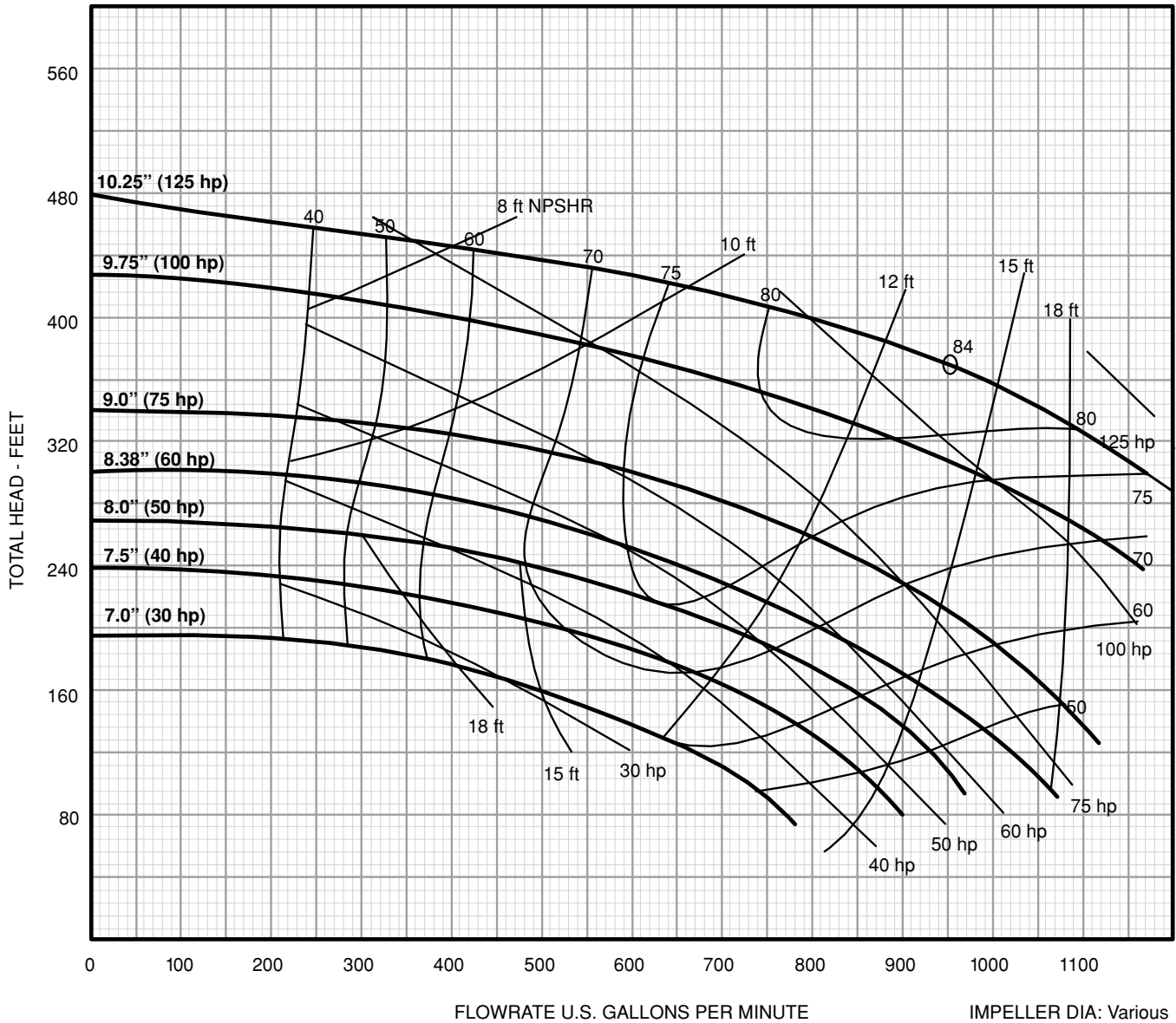
CENTRIFUGAL PUMPS

CLOSE-COUPLED 3600 RPM



PERFORMANCE CURVE

10" 4 X 6 - 10



IMPELLER DIA: Various
SPEED: 3550 RPM
SOLIDS: .94"

NOTES

CLOSE-COUPLED 3600 RPM



NOTES

CLOSE-COUPLED 3600 RPM



