

SUBMERSIBLE TURBINE PUMPS

6" STS SERIES - 175 GPM

FPS

FEATURES

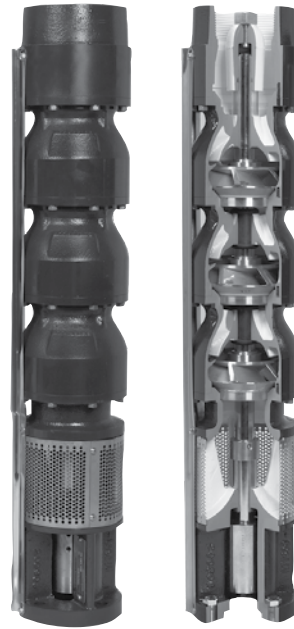
- 100% factory wet tested with test results shipped with each pump
- Premium ductile iron casting for longer life and higher pressures
- Longer discharge and motor bracket bearings for increased pump life
- Spiral cutlass rubber intermediate bearings designed for harsh environments
- 416 Stainless steel pump shaft ground and polished for maximum durability
- Investment cast stainless steel impellers for superior performance
- Custom configurations available
- The optional bracket provides the ability to use larger 8" motors on smaller 5" and 6" pumps, offering higher performance ratings and system optimization

SPECIFICATIONS

- 6" minimum well I.D.
- 10' minimum submergence above inlet
- 4" NPT discharge
- 350 psi standard (675 psi double bolted) maximum working pressure
- 150 ppm maximum allowable amount of sand
- Basic Model: 175STS6, PEI_{CL} Number: 0.90

MODEL NO. EXPLANATION

- Example: 175STS10D6X-0464
- 175 = GPM
- STS = Sub Turbine Series
- 10 = Motor HP
- D = Ductile Iron
- 6 = 6" Pump
- X = Impeller Trim Configuration
- 04 = Number of Stages
- 6 = 6" Motor Bracket
- 4 = 4" Discharge



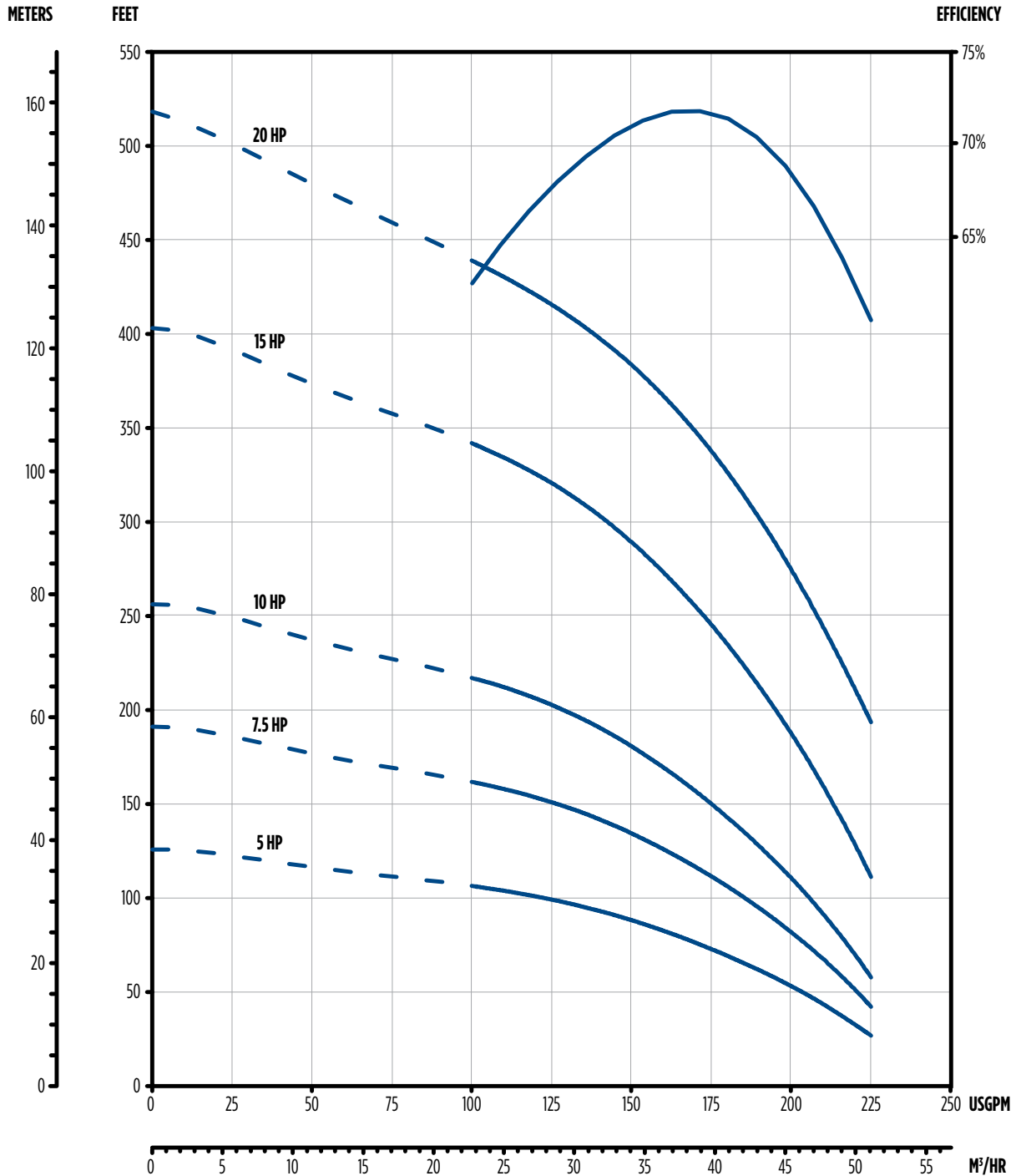
SUBMERSIBLE TURBINE PUMPS

6" STS SERIES - 175 GPM



PERFORMANCE

Basic Model	PEI _{CL} Number
175STS6	0.90



— RECOMMENDED OPERATING RANGE

NOTE: Performance based on 68°F fresh water; 6" motor at 3450 rpm

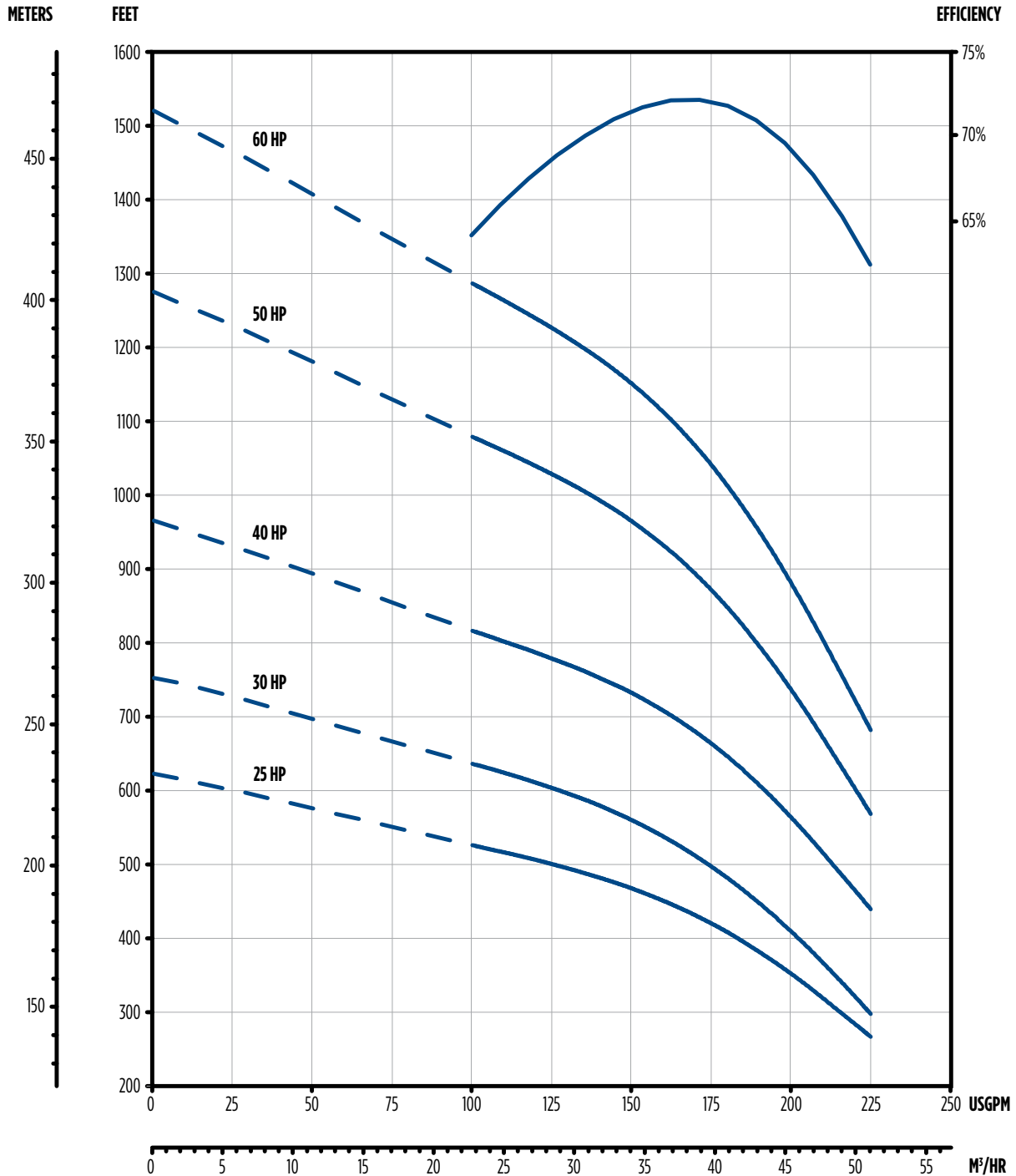
SUBMERSIBLE TURBINE PUMPS

6" STS SERIES - 175 GPM



PERFORMANCE

Basic Model	PEI _{CL} Number
175STS6	0.90



— RECOMMENDED OPERATING RANGE

NOTE: Performance based on 68 °F fresh water; 6" motor at 3450 rpm

SUBMERSIBLE TURBINE PUMPS

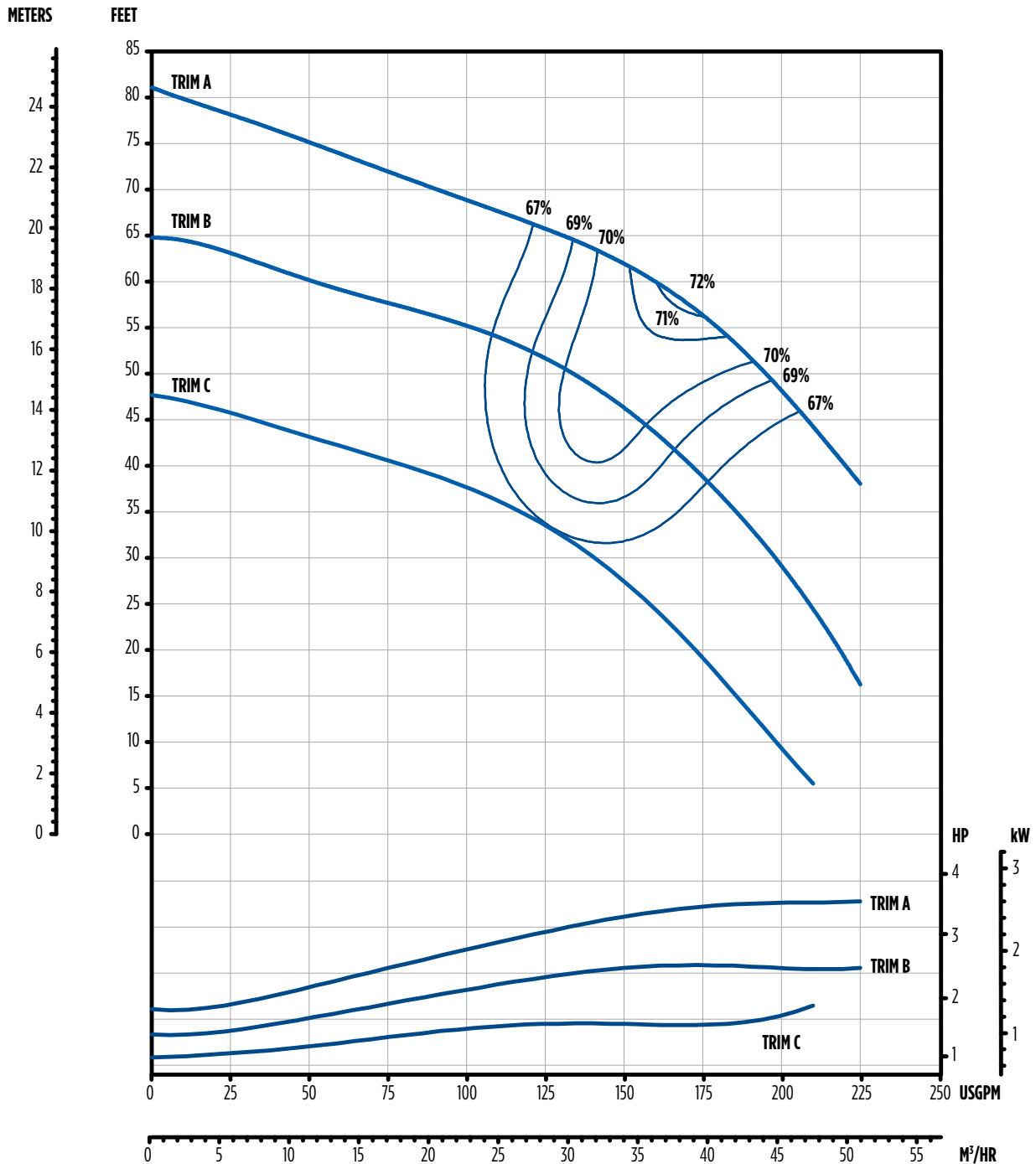
6" STS SERIES - 175 GPM



DIMENSIONS

SINGLE-STAGE

Basic Model	PEI _{CL} Number
175STS6	0.90



Note: Efficiencies are typical, not guaranteed; efficiency correction required for low stage count (1 stage-6%, 2 stage-2%, 3 stage-1%); pumps are intentionally designed to utilize some portion of the motor's 1.15 service factor; bowl #9 begins transition to double bolted (8 bolts at bottom, 14 bolts at top); nominal rpm is 3450

SUBMERSIBLE TURBINE PUMPS

6" STS SERIES - 175 GPM



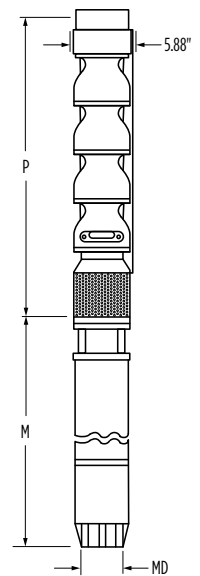
ORDERING INFORMATION

HP	Stages	Trim Size	Motor Size	Discharge Size	Basic Model	PEI _{CL}	Order No.	Model No.	Shipping Wt. (lbs)
5	2	B	6"	4" NPT	175STS6	0.90	97060175102	175STS5D6B-0264	76
7.5	3	B					97060175103	175STS7D6B-0364	90
10	4	B					97060175304	175STS10D6B-0464	102
15	6	1A, 5B					97060175306	175STS15D6X-0664	129
20	7	4A, 3B					97060175307	175STS20D6X-0764	143
25	8	7A, 1B					97060175008	175STS25D6X-0864	155
30	10	7A, 3B					97060175310	175STS30D6X-1064	208
40	12	12A					97060175012	175STS40D6A-1264	186
50	16	15A, 1B					97060175016	175STS50D6X-1664	300
60	19	18A, 1B					97060175019	175STS50D6X-1964	343

DIMENSIONS

HP	Stages	Trim	Motor Size	P	M*	MD*	Motor Wt.	Pump Wt.
				in	in	in		
5	2	B	6"	25.46	22.90	5.38	101	65
7.5	3	B		30.21	24.20	5.38	108	77
10	4	B		34.96	25.40	5.38	116	89
15	6	1A, 5B		44.46	28.00	5.38	129	114
20	7	4A, 3B		49.21	30.56	5.38	135	126
25	8	7A, 1B		53.96	33.10	5.38	148	138
30	10	7A, 3B		63.46	35.70	5.38	162	162
40	12	12A		72.96	40.80	5.38	195	186
50	16	15A, 1B		91.96	57.80	5.38	310	235
60	19	18A, 1B		106.21	63.80	5.38	340	271

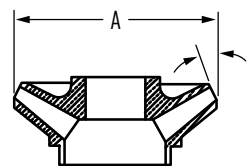
NOTE: *MD diameter = Franklin Electric Motor, M = Maximum Length of Franklin Electric Motor



DIMENSIONS

IMPELLER

Trim	Diameter (in)	C Angle
A	4.688	20°
B	4.250	20°
C	3.750	20°



MATERIALS

Part Name	Common Material Name	Material Specification No.
Discharge Bracket	Ductile Iron	ASTM A536 65-45-12
Top Bowl	Ductile Iron	ASTM A536 65-45-12
Intermediate Bowl	Ductile Iron	ASTM A536 65-45-12
Bearings, Discharge/Suction	Bronze	ASTM B584 C89835
Impeller	304 Stainless Steel	ASTM A743/A743M CF8
Pump Shaft	416 Stainless Steel	ASTM A582 S41600
Suction Bracket	Ductile Iron	ASTM A536 65-45-12
Bowl Bearing	Rubber	Rubber
Sand Collar	300 Stainless Steel	ASTM A666
Suction Screen	302 Stainless Steel	ASTM A240 S30200
Cable Guard	300 Stainless Steel	ASTM A666
Shaft Coupling	416 Stainless Steel	ASTM A582 S41600
Upthrust Bolt	300 Stainless Steel	ASTM A666
Taper Lock	416 Stainless Steel	ASTM A582 S41600
Bolting	300 Stainless Steel	ASTM A666

NOTE: Bowl bearing and shaft options available; contact customer service for available options

SUBMERSIBLE TURBINE PUMPS

6" STS SERIES - 175 GPM

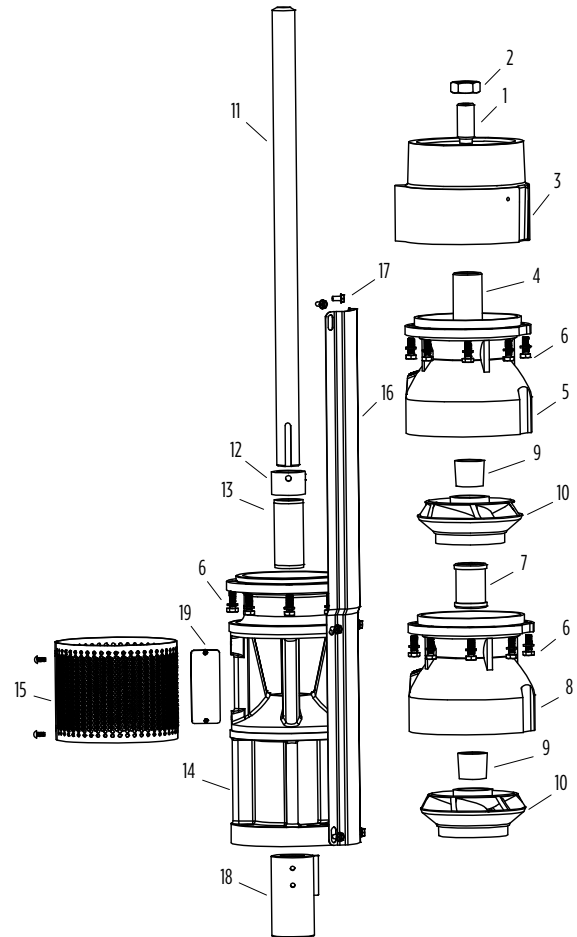


REPAIR PARTS

Item No.	Part Description	Part No.	Qty. Per
1,2	Upthrust Bolt/Nut Kit	305471553	1
3	Discharge 4" NPT (no top bearing)	305471449	1
	Discharge 4" NPT w/Rubber Top Bearing	305471453	
	Discharge 4" NPT w/FKM Top Bearing	305471455	
4	Top Bearing, Bronze-100 GPM (included in 5)	305471385	As Req.
	Top Bearing, Rubber (included in 3)	305471395	
	Top Bearing, FKM (included in 3)	305471396	
5	Top Bowl w/Bronze Top Bearing	305471519	As Req.
	Top Bowl w/Bronze Top Bearing XP	305471520	
6	Bowl Bolt Kit (8 pieces)*	305471548	As Req.
	Bowl Bolt Kit (1000 pieces)	305471550	
7	Bowl Bearing, Bronze-100 GPM (included in 8)	305471387	As Req.
	Bowl Bearing, Rubber-100 GPM (Included in 8)	305471398	
	Bowl Bearing, FKM-100 GPM (included in 8)	305471399	
8	Bowl and Bearing Assembly, Bronze	305471487	As Req.
	Bowl and Bearing Assembly XP, Bronze	305471491	
	Bowl and Bearing Assembly, Rubber	305471485	
	Bowl and Bearing Assembly XP, Rubber	305471489	
	Bowl and Bearing Assembly, FKM	305471488	
	Bowl and Bearing Assembly XP, FKM	305471492	
9	Taper Lock Collet Kit (included in 10)	305471372	As Req.
12	Sand Cap w/Set Screws	305471374	1
13	Motor Bracket Bearing, Bronze (included in 14)	305471389	As Req.
	Motor Bracket Bearing, Rubber (included in 14)	305471395	
	Motor Bracket Bearing, FKM (included in 14)	305471396	
14	6" Motor Bracket w/Bronze Bearing	305471419	1
	6" Motor Bracket w/Rubber Bearing	305471420	
	6" Motor Bracket w/FKM Bearing	305471422	
	8" Motor Bracket w/Bronze Bearing**	305472598	
15	6" Suction Screen w/Screws	305471377	1
17	Cable Guard Screw Kit (8 pieces)	305471000	1
18	6" Coupling	305471402	1
-	6" Motor Bolt Kit	305352901	1
19	Nameplate w/Drive Screws	305418901	1
-	Owner's Manual	106089101	1

*Pumps of 9 stages or more require double bolting; two bolt kits (305471548) per stage will be required for the 9th stage and above

**8" Motor rated up to 60 hp



REPAIR PARTS

IMPELLER

Item No.	Trim	Diameter (in)	C Angle	Kit w/Collets
10	A	4.688	20 °	305471560
	B	4.250	20 °	305471561
	C	3.750	20 °	305471562

NOTE: Shaft and cable guard information located on the following pages

SUBMERSIBLE TURBINE PUMPS

6" STS SERIES - 175 GPM



REPAIR PARTS

6" Shafts				
Item No.	Stages	Length	Part No.	
			416 SS	Chrome
11	1	305471302	305471345	305471320
	2	305471303	305471346	305471321
	3	305471304	305471347	305471322
	4	305471305	305471348	305471323
	5	305471306	305471349	305471324
	6	305471307	305471350	305471325
	7	305471308	305471351	305471326
	8	305471309	305471352	305471327
	9	305471310	305471353	305471328
	10	305471311	305471354	305471329
	11	305471312	305471355	305471330
	12	305471313	305471356	305471331
	13	305471314	305471357	305471332
	14	305471295	305471338	305471333
	15	305471315	305471358	305471334
	16	305471316	305471359	305471335
	17	305471317	305471360	305471336
	18	305471318	305471361	305471337
	19	305471319	305471362	305471338
	Cut-To-Length	4	305471363	-
	Cut-To-Length	6	305471364	-
	Cut-To-Length	8	305471365	-
	Cut-To-Length	10	305471366	-

6" Cable Guards (Pre-Cut)			
Item No.	Stages	Length (in)	Part No.
16	Cut-To-Length	120.00	305471100
	1	18.62	305471121
	2	23.38	305471122
	3	28.12	305471123
	4	32.88	305471124
	5	37.62	305471125
	6	42.38	305471126
	7	47.12	305471127
	8	51.88	305471128
	9	56.62	305471129
	10	61.38	305471130
	11	66.12	305471131
	12	70.88	305471132
	13	75.62	305471133
	14	80.38	305471119
	15	85.12	305471134
	16	89.88	305471135
	17	94.62	305471136
	18	99.38	305471137
19	104.12	305471138	

