

CENTRIFUGAL PUMPS

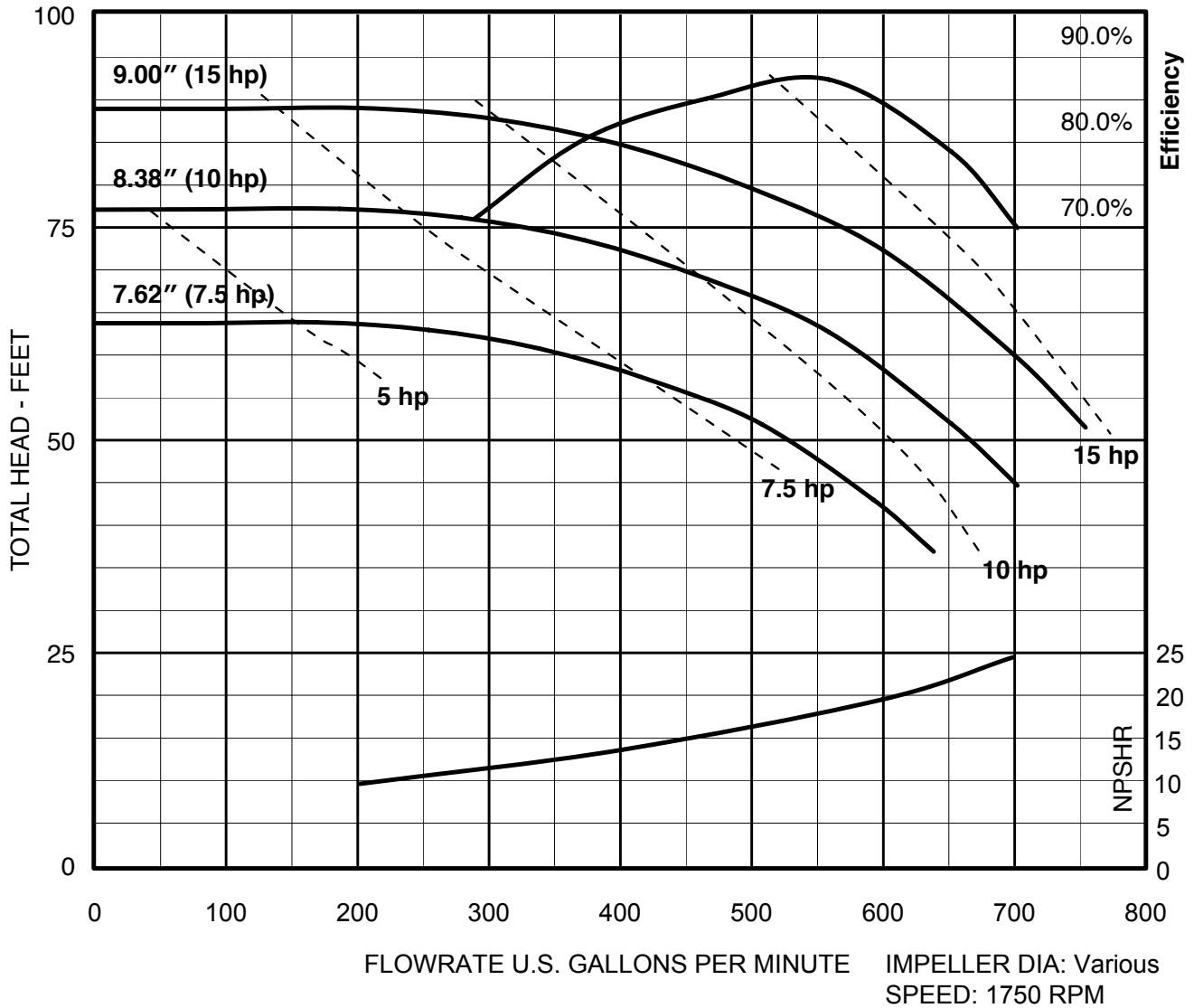
CLOSE-COUPLED 1800 RPM



PERFORMANCE CURVE

9" 3X4-9

Basic Model	PEL _a Number
XS439	0.94



CENTRIFUGAL PUMPS

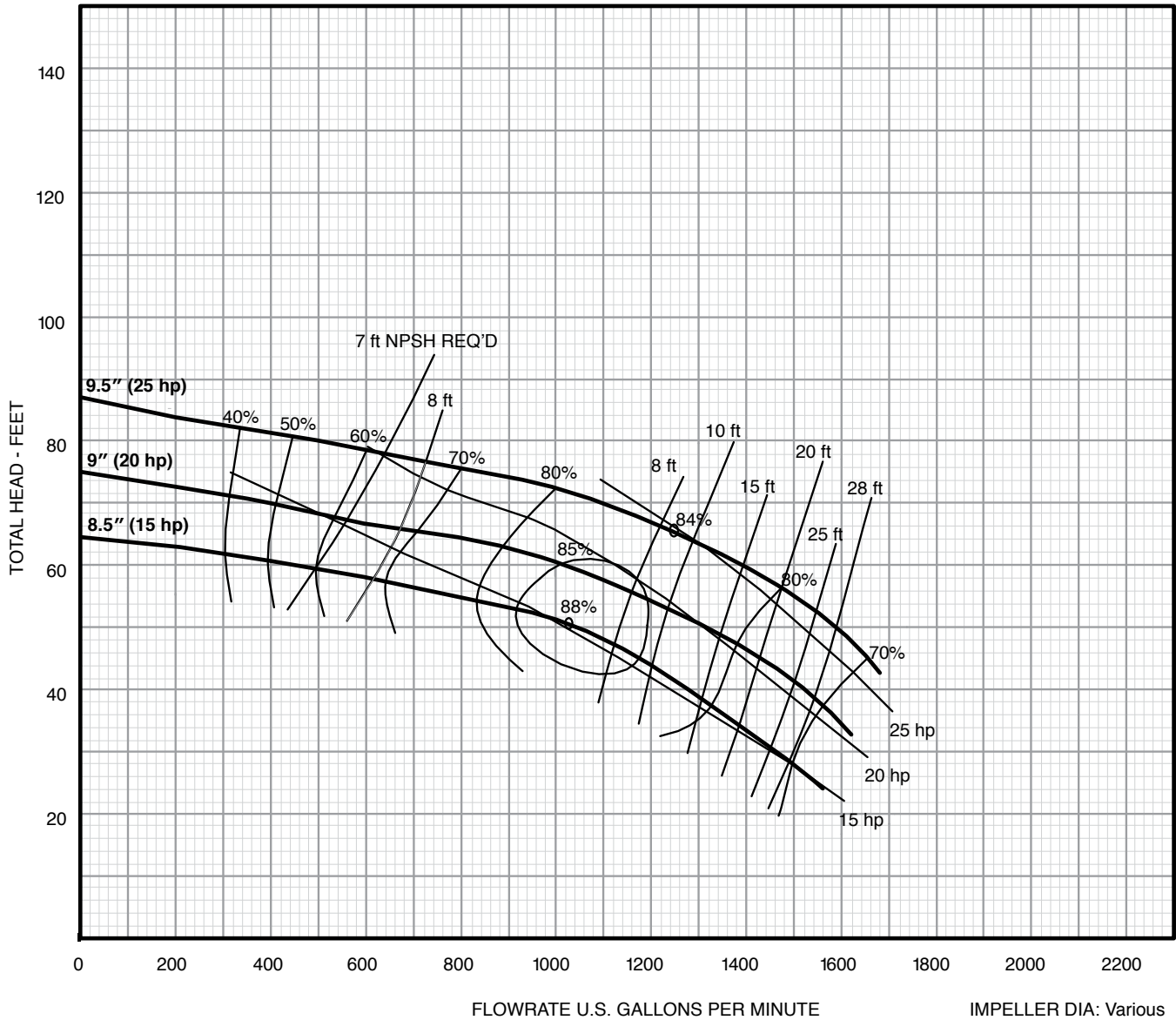
CLOSE-COUPLED 1800 RPM



PERFORMANCE CURVE

10" 6 X 8 - 10L

Basic Model	PEL _a Number
HC8695	0.96



IMPELLER DIA: Various
 SPEED: 1780 RPM
 SOLIDS: 1.63"

CENTRIFUGAL PUMPS

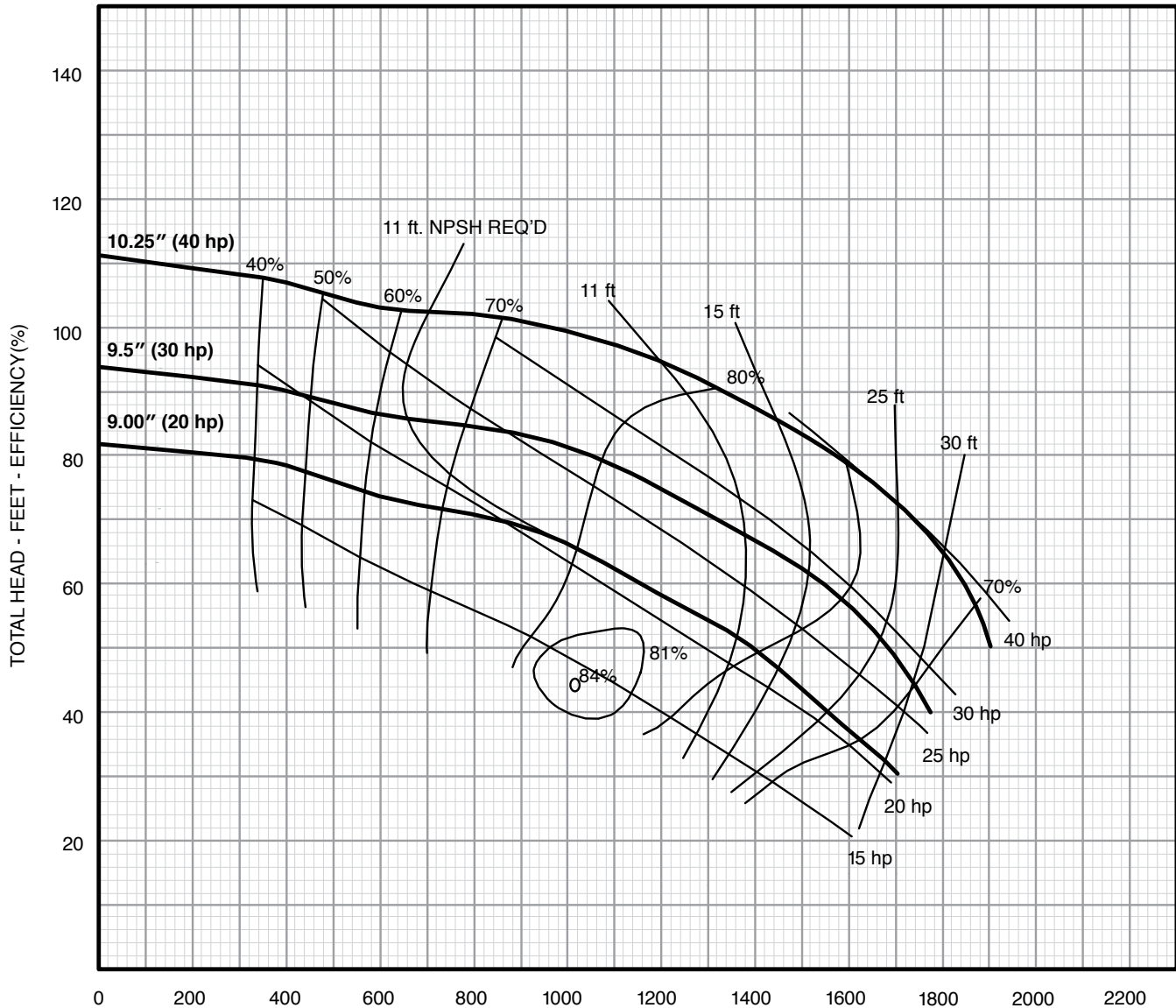
CLOSE-COUPLED 1800 RPM



PERFORMANCE CURVE

10" 6 X 8 - 10

Basic Model	PEI _a Number
HC8610	0.97



FLOWRATE U.S. GALLONS PER MINUTE

IMPELLER DIA: Various
SPEED: 1760 RPM
SOLIDS: 1.63"

CENTRIFUGAL PUMPS

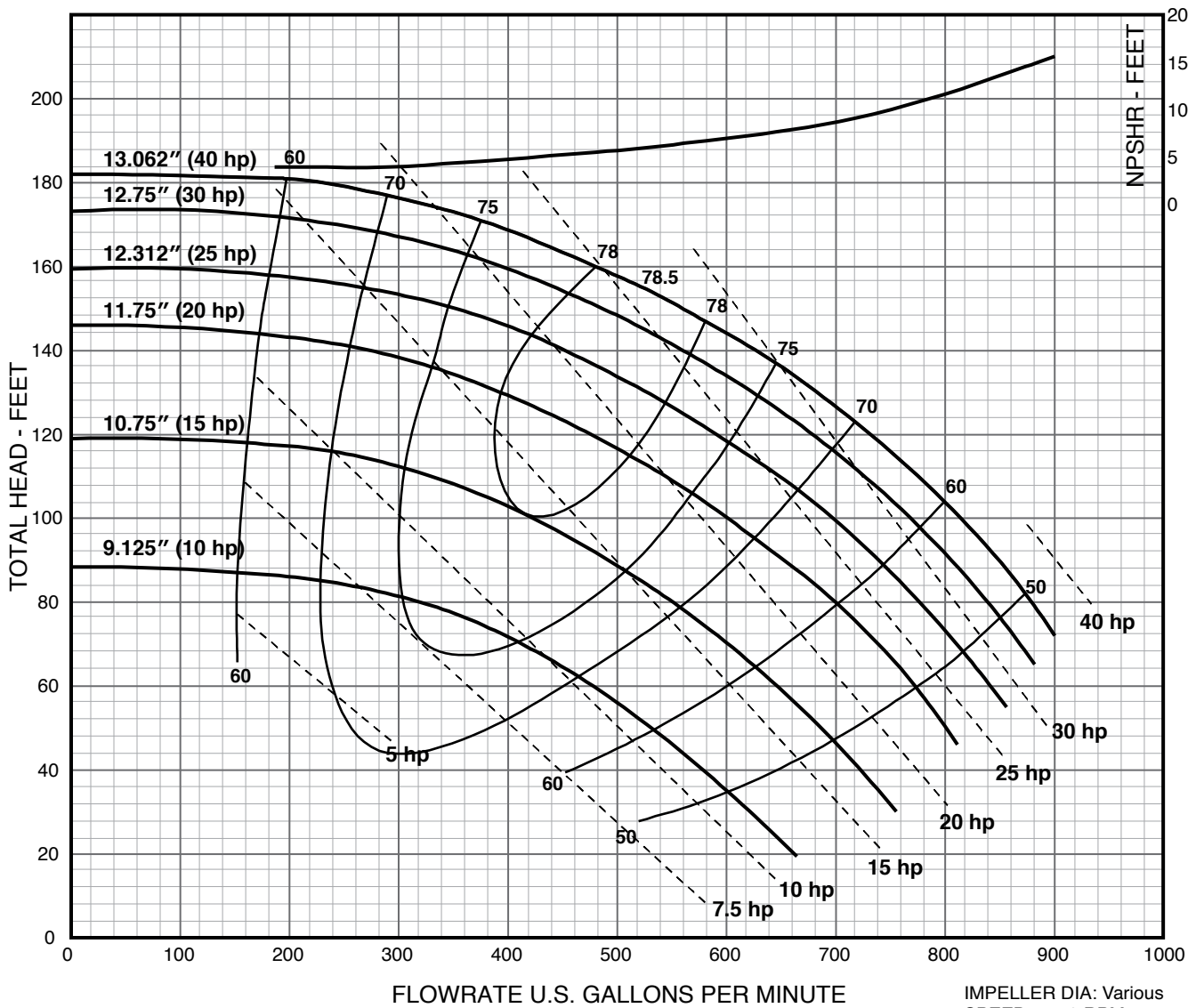
CLOSE-COUPLED 1800 RPM



PERFORMANCE CURVE

13" 3 X 4 - 13

Basic Model	PEL _a Number
XS4313	0.99



IMPELLER DIA: Various
 SPEED: 1750 RPM
 SOLIDS: .50"

CENTRIFUGAL PUMPS

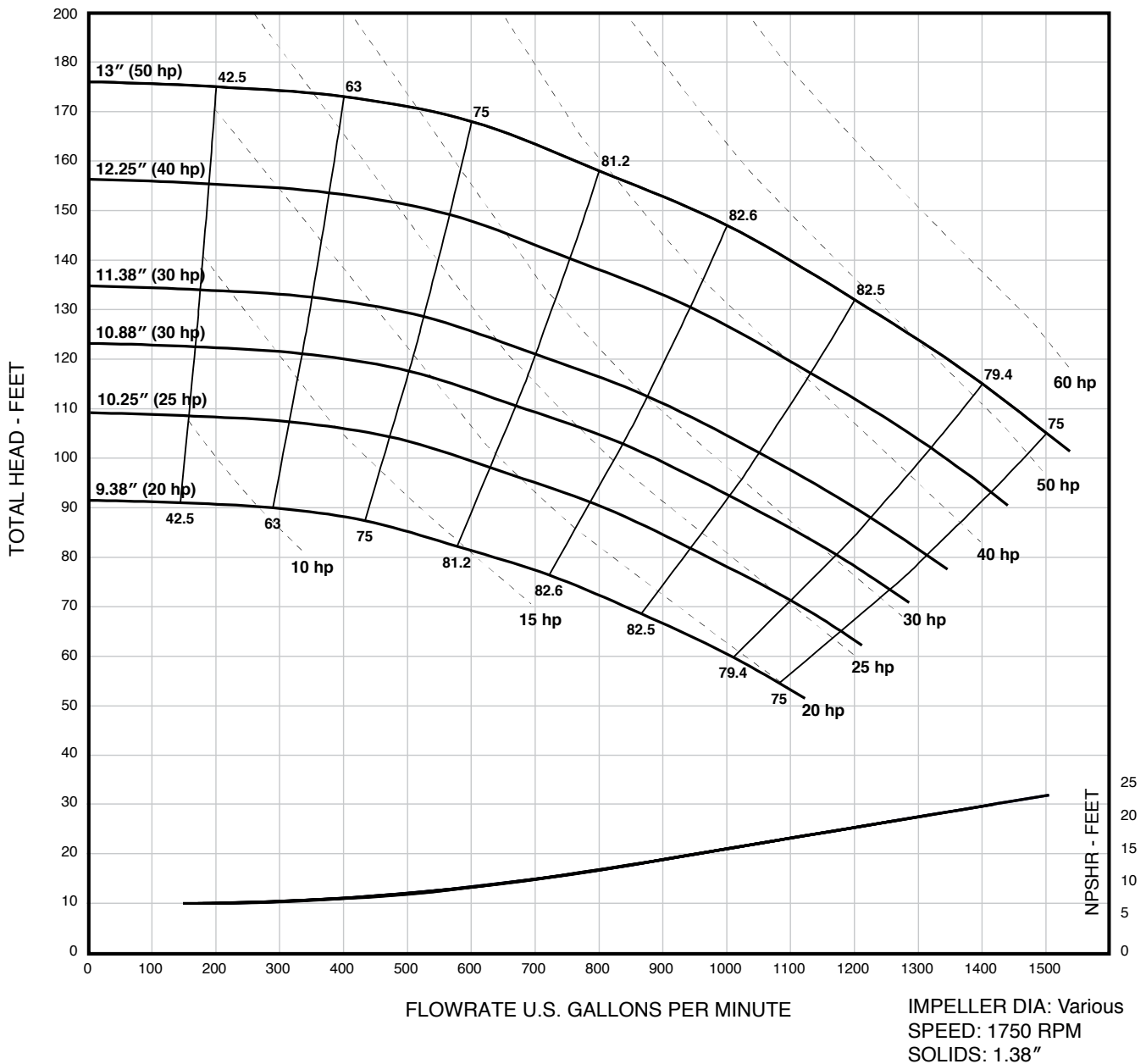
CLOSE-COUPLED 1800 RPM



PERFORMANCE CURVE

13" 4 X 6 - 13H

Basic Model	PEL ₁ Number
XS6413	0.94



CENTRIFUGAL PUMPS

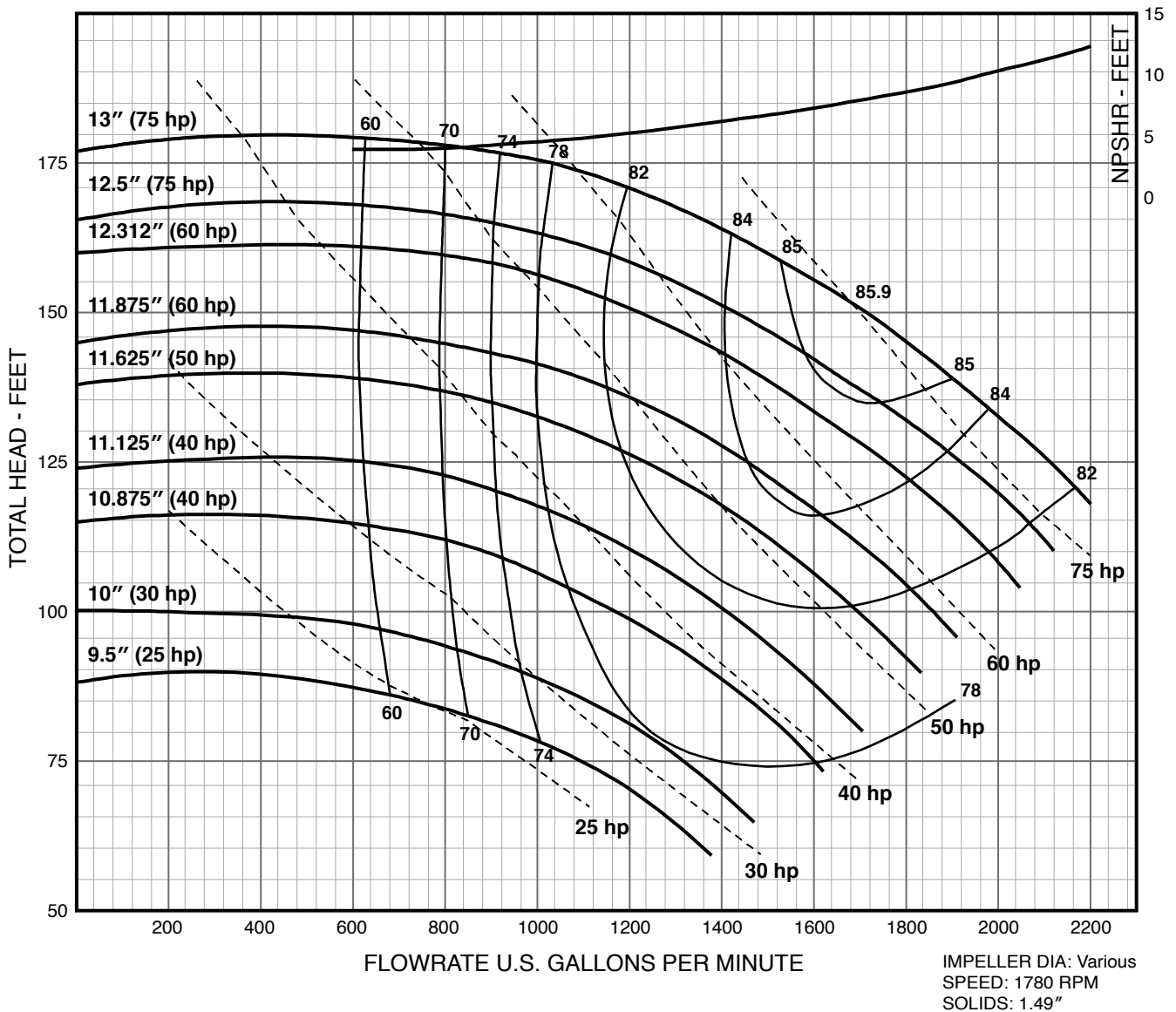
CLOSE-COUPLED 1800 RPM



PERFORMANCE CURVE

13" 6 X 8 - 13

Basic Model	PEI _a Number
XS8613	0.96



CENTRIFUGAL PUMPS

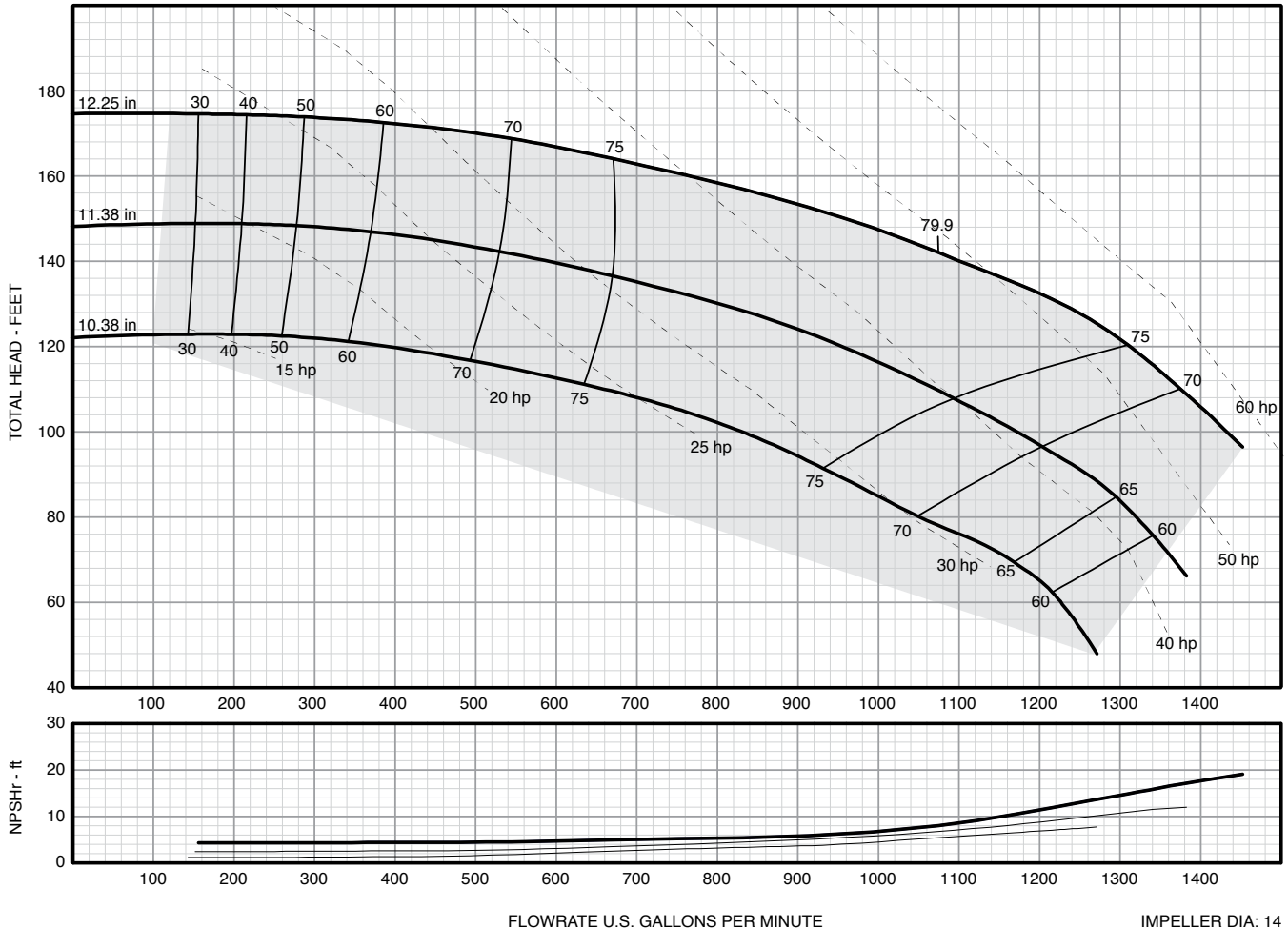
CLOSE-COUPLED 1800 RPM



PERFORMANCE CURVE

14" 6 X 4 - 14L

Basic Model	PEL _a Number
HC6414	0.95



IMPELLER DIA: 14
SPEED: 1800 RPM
DIA: 12.25"

CENTRIFUGAL PUMPS

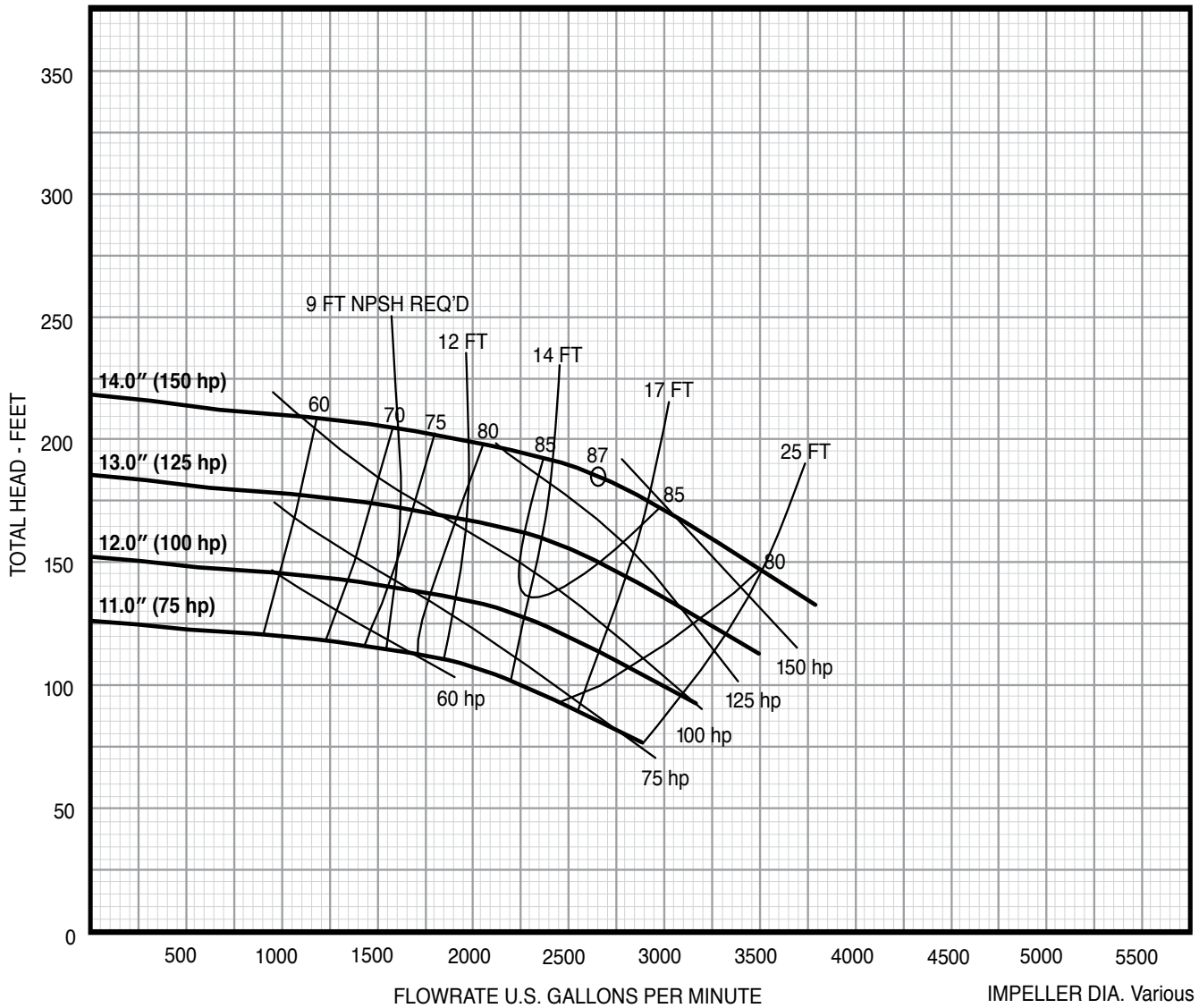
CLOSE-COUPLED 1800 RPM



PERFORMANCE CURVE

14" 6 X 8 - 14

Basic Model	PEL _a Number
HC8614	1.00



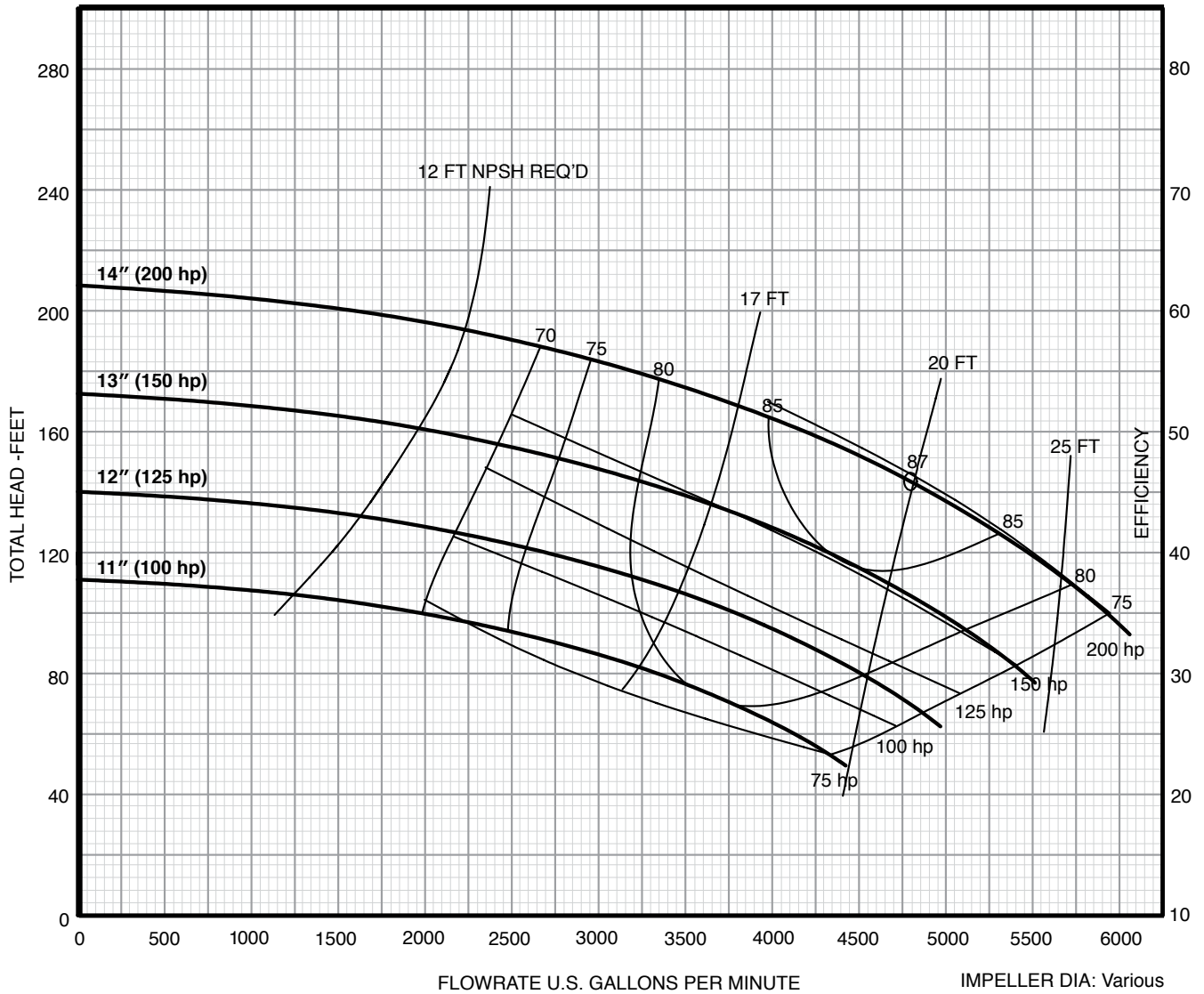
CENTRIFUGAL PUMPS

CLOSE-COUPLED 1800 RPM



PERFORMANCE CURVE

13" 10 X 10 - 14



NOTES

CLOSE-COUPLED 1800 RPM



NOTES

CLOSE-COUPLED 1800 RPM





Franklin Electric