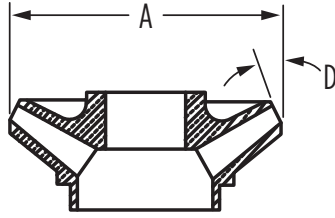




ENGINEERING DATA

STS TURBINE IMPELLER

MECHANICAL DATA



Model	Trim Diameter (A) (inch)			Eye Area (inch ²)	Trim Angle (D) (degree)
	A Trim	B Trim	C Trim		
90STS5	4.055	3.866	3.681	2.04	15.5
120STS5	4.055	3.866	3.681	2.13	15.5
150STS5	4.055	3.866	3.681	2.32	15.5
180STS5	4.055	3.902	3.75	2.7	24.1
220STS5	4.055	3.902	3.75	2.81	20
270STS5	4.055	3.902	3.75	2.85	24.1
100STS6	4.688	4.2	3.688	2	18
150STS6	4.688	4.25	3.75	2.38	27
175STS6	4.688	4.25	3.75	2.3	20
200STS6	4.625	4.438	4.25	2.75	30
225STS6	4.472	3.972	3.784	3.08	25.5
275STS6	4.568	4.193	3.818	3.07	17
325STS6	4.5	4.25	4	3.28	30
375STS6	4.688	4.44	4.313	3.28	35
500STS6	4.6	4.475	4.288	3.28	32
225STS8	5.705	5.561	5.083	3.28	20
275STS8	5.705	5.562	5.084	2.729	20
350STS8	5.701	5.229	4.757	3.156	20
450STS8	5.72	5.17	4.835	3.156	20
550STS8	5.674	5.371	5.227	3.81	17
700STS8	5.672	5.451	5.225	3.87	17
1000STS8-A	5.716			4.77	11
1000STS8-B		5.716		4.77	21
600STS9	7.402	6.929	6.457	4.03	18
1050STS9	7.047	6.732	6.417	4.05	17
1200STS9	7.402	7.008	6.614	4.04	17